

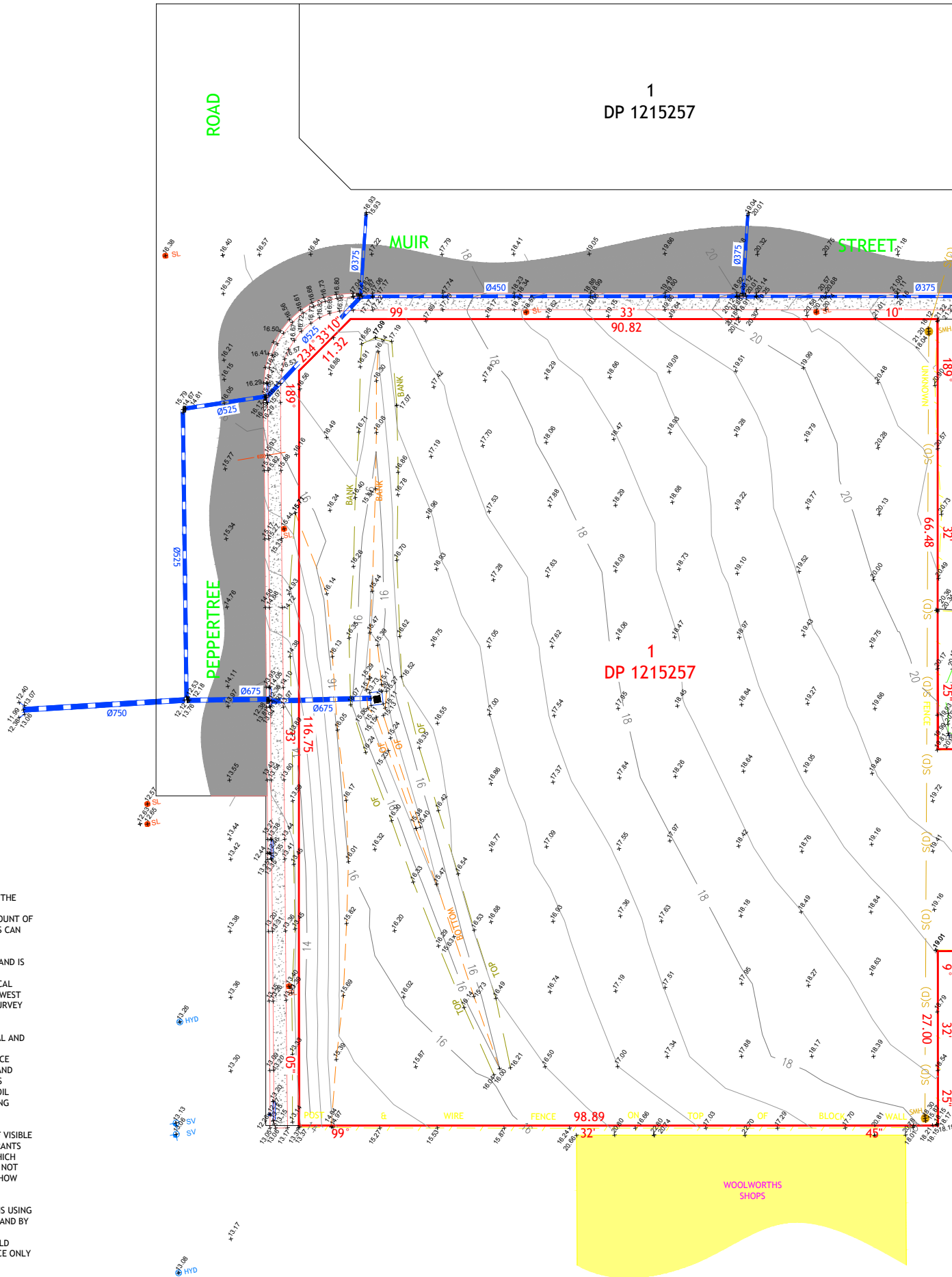
190514-DET-001-B
Plotted By: Andy Erving Plot Date: 24/06/19 10:19:06AM Cad File: S:\190514\DRAWINGS\SURVEY\190514-DET-001-B.DWG
This plan includes coloured information. If you have a black and white copy you do not have all of the information. This note is coloured RED.

LEGEND

- TREE
- PHOTOGRAPH DIRECTION
- BOUNDARY LINE
- ADJOINING BOUNDARY LINE
- MINOR CONTOUR LINE
- MAJOR CONTOUR LINE
- UNDERGROUND STORMWATER PIPE (QL C)
- UNDERGROUND SEWER (QL D)
- ELECTRICAL OVERHEAD
- FENCE LINE
- BOTTOM OF BANK
- TOP OF BANK
- EDGE OF GRAVEL
- COMMUNICATIONS PIT
- HYDRANT
- STOP VALVE
- POWER POLE
- STREET LIGHT
- SEWER MAN HOLE
- HEADWALL
- DRAIN
- GATE

NOTES:-

- BOUNDARIES HAVE BEEN DETERMINED BY PLAN DIMENSIONS ONLY AND HAVE NOT BEEN SURVEYED.
- SERVICES HAVE BEEN LOCATED WHERE VISIBLE ONLY. PRIOR TO EXCAVATION OR CONSTRUCTION ALL SERVICES ARE TO BE LOCATED BY THE RELEVANT AUTHORITY.
- SPOT LEVELS AND CONTOURS SHOWN HEREON ARE FOR DESIGN PURPOSES ONLY AND ARE TO BE CONFIRMED ON SITE PRIOR TO ANY EXCAVATION OR CONSTRUCTION.



SUBSURFACE UTILITY INVESTIGATION (SUI) QUALITY LEVEL LABELLING UTILITY INFORMATION BY A CLASSIFICATION CODE ALLOWS THE USER OF THIS INFORMATION TO UNDERSTAND CLEARLY HOW THE INFORMATION WAS COLLECTED AND THEN PLACE AN APPROPRIATE AMOUNT OF RELIANCE ON IT. PROJECT RISKS RELATED TO UNDERGROUND UTILITIES CAN THEN BE PROPERLY MANAGED.

QL - 'A': INFORMATION IS THE HIGHEST POSSIBLE LEVEL OF ACCURACY AND IS OBTAINED BY EXPOSING THE UNDERGROUND UTILITY USING A NON-DESTRUCTIVE EXCAVATION (POTHOLING) TECHNIQUE. THE VERTICAL INFORMATION FOR THIS LOCATING METHOD IS TO THE TOP OR SHALLOWEST PART OF THE LOCATED SERVICE. THE 3D LOCATION IS RECORDED BY SURVEY AS AN X, Y, Z COORDINATE.

QL - 'B': INFORMATION IS COLLECTED BY DESIGNATING THE HORIZONTAL AND VERTICAL LOCATION OF UNDERGROUND UTILITIES BY USING ELECTROMAGNETIC PIPE AND CABLE LOCATORS, SONDES OR FLEXI-TRACE EQUIPMENT. THIS IS THE MOST COMMON FORM OF UTILITY LOCATING AND ALTHOUGH AN X, Y AND Z AXIS CAN BE ESTABLISHED IT IS NOT ALWAYS ENTIRELY ACCURATE DUE TO DIFFERING ELECTROMAGNETIC FIELDS, SOIL CONDITIONS AND MULTIPLE BANKS OF CABLES AFFECTING THE LOCATING SIGNAL.

QL - 'C': INFORMATION IS COLLECTED BY CORRELATING THE SURVEY OF VISIBLE UTILITY SURFACE FEATURES SUCH AS MARKER PLATES OR WATER HYDRANTS AND ACQUIRED DIAL-BEFORE-YOU-DIG PLANS TO "DRAW" A STRING WHICH SHOWS THE APPROXIMATE POSITION OF SERVICES. THIS METHOD DOES NOT USUALLY SHOW MULTIPLE BANKS OF CABLES AND DOES NOT ALWAYS SHOW THREE DIMENSIONAL INFORMATION.

QL - 'D': INFORMATION IS THE MOST BASIC LEVEL OF UTILITY LOCATIONS USING ONLY INFORMATION BASED ON EXISTING DIAL-BEFORE-YOU-DIG PLANS AND BY MEASURING BOUNDARY OFFSETS AS WELL AS ASSISTANCE VIA GROUND PENETRATING RADAR ETC. THIS METHOD OF UTILITY LOCATIONS SHOULD ALWAYS BE TREATED AS AN INDICATION OF THE PRESENCE OF A SERVICE ONLY AND SHOULD NOT BE USED FOR DESIGN.

ALL UTILITIES ARE QL - 'D' UNLESS OTHERWISE NOTED

ver.	date	comment	surveyed	drawn	checked	pm	co-ordinate information	level information	scale (A1 original size)	page
B	24.06.19	INITIAL ISSUE	C.G.	A.E.	B.MC	B.MC	CO-ORDINATE SYSTEM: MGA 56 ORIGIN OF CO-ORDINATES: P.M. 30024 DATE OF SURVEY 12.07.18	DATUM: A.H.D. ORIGIN OF LEVELS: P.M. 30024 CONTOUR INTERVAL: 0.5m	0 10.0 20.0m SCALE: 1:400 (FULL)	1 OF 1

- (A) EASEMENT FOR TRANSMISSION LINE 20.115 WIDE (F.602288)
- (B) EASEMENT FOR GAS PIPELINE 6 WIDE (DP.640232)
- (C) EASEMENT FOR DRAINAGE OF WATER 3 WIDE (DP.869834)
- (D) EASEMENT FOR DRAINAGE OF WATER 20 WIDE (DP.869834)
- (E) EASEMENT FOR DRAINAGE OF WATER 3 WIDE (DP.871817)



drawing title:
**CONTOUR & DETAIL
SURVEY UPON
LOT 1 D.P 1215257**

location: 795 MEDOWIE ROAD
MEDOWIE

council: PORT STEPHENS

dwg ref: 190514-DET-001-B

client:

MEDOWIE RETAIL
UNIT TRUST

central coast office ph: (02) 4305 4300
hunter office ph: (02) 4978 5100
sydney office ph: (02) 8046 7411

www.adwjohanson.com.au

